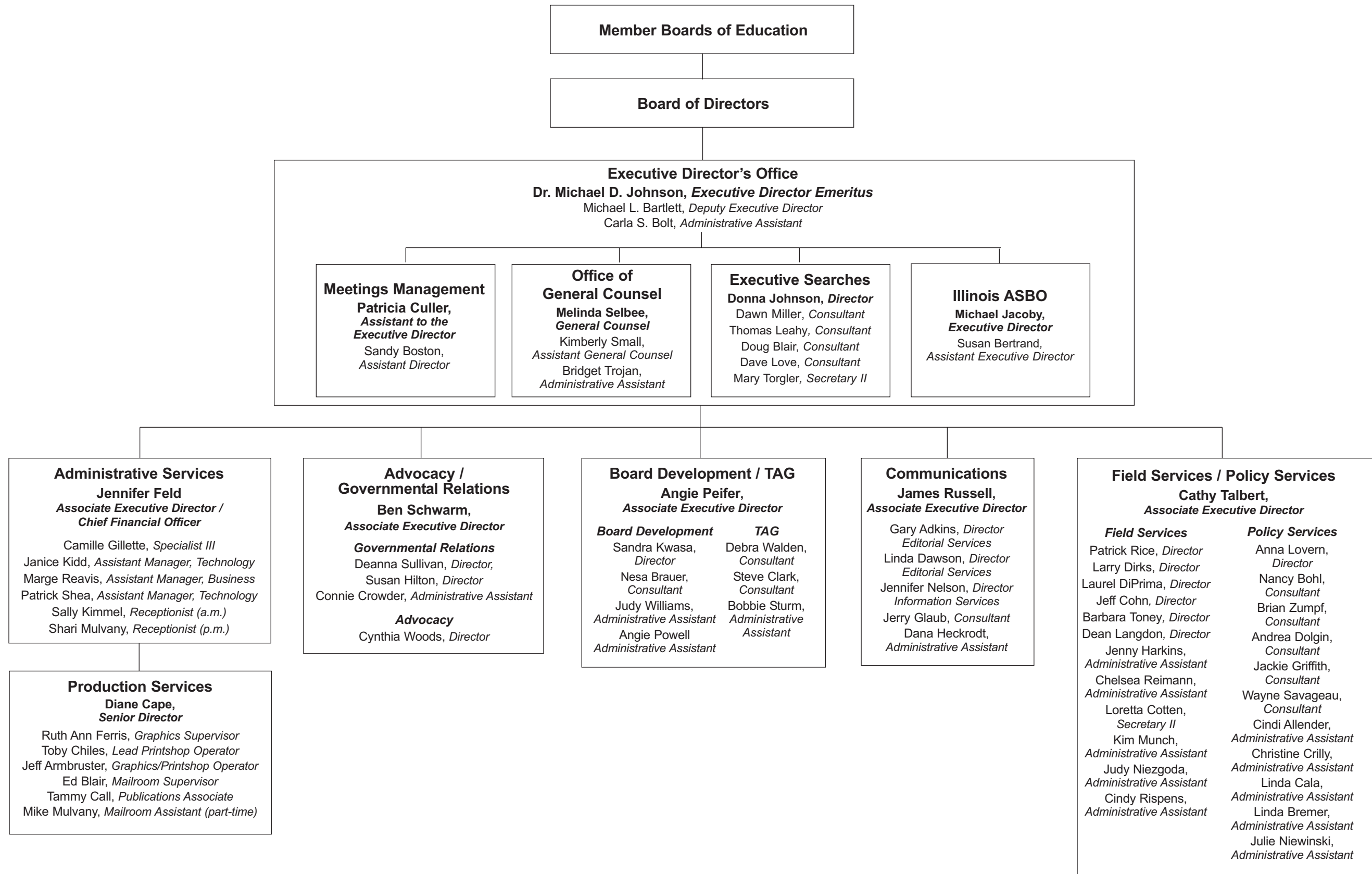


Illinois Association of School Boards Organizational Structure — September 2011



Member Boards of Education

Board of Directors

Executive Director's Office
Dr. Michael D. Johnson, Executive Director Emeritus
 Michael L. Bartlett, Deputy Executive Director
 Carla S. Bolt, Administrative Assistant

Meetings Management
Patricia Culler,
Assistant to the Executive Director
 Sandy Boston,
Assistant Director

Office of General Counsel
Melinda Selbee,
General Counsel
 Kimberly Small,
Assistant General Counsel
 Bridget Trojan,
Administrative Assistant

Executive Searches
Donna Johnson, Director
 Dawn Miller, Consultant
 Thomas Leahy, Consultant
 Doug Blair, Consultant
 Dave Love, Consultant
 Mary Torgler, Secretary II

Illinois ASBO
Michael Jacoby,
Executive Director
 Susan Bertrand,
Assistant Executive Director

Administrative Services
Jennifer Feld
Associate Executive Director / Chief Financial Officer

Camille Gillette, Specialist III
 Janice Kidd, Assistant Manager, Technology
 Marge Reavis, Assistant Manager, Business
 Patrick Shea, Assistant Manager, Technology
 Sally Kimmel, Receptionist (a.m.)
 Shari Mulvany, Receptionist (p.m.)

Production Services
Diane Cape,
Senior Director

Ruth Ann Ferris, Graphics Supervisor
 Toby Chiles, Lead Printshop Operator
 Jeff Armbruster, Graphics/Printshop Operator
 Ed Blair, Mailroom Supervisor
 Tammy Call, Publications Associate
 Mike Mulvany, Mailroom Assistant (part-time)

Advocacy / Governmental Relations
Ben Schwarm,
Associate Executive Director

Governmental Relations
 Deanna Sullivan, Director,
 Susan Hilton, Director
 Connie Crowder, Administrative Assistant
Advocacy
 Cynthia Woods, Director

Board Development / TAG
Angie Peifer,
Associate Executive Director

Board Development Sandra Kwasa, Director Nesa Brauer, Consultant Judy Williams, Administrative Assistant Angie Powell, Administrative Assistant	TAG Debra Walden, Consultant Steve Clark, Consultant Bobbie Sturm, Administrative Assistant
--	---

Communications
James Russell,
Associate Executive Director

Gary Adkins, Director, Editorial Services
 Linda Dawson, Director, Editorial Services
 Jennifer Nelson, Director, Information Services
 Jerry Glaub, Consultant
 Dana Heckrodt, Administrative Assistant

Field Services / Policy Services
Cathy Talbert,
Associate Executive Director

Field Services Patrick Rice, Director Larry Dirks, Director Laurel DiPrima, Director Jeff Cohn, Director Barbara Toney, Director Dean Langdon, Director Jenny Harkins, Administrative Assistant Chelsea Reimann, Administrative Assistant Loretta Cotten, Secretary II Kim Munch, Administrative Assistant Judy Niezgoda, Administrative Assistant Cindy Rispens, Administrative Assistant	Policy Services Anna Lovern, Director Nancy Bohl, Consultant Brian Zumpf, Consultant Andrea Dolgin, Consultant Jackie Griffith, Consultant Wayne Savageau, Consultant Cindi Allender, Administrative Assistant Christine Crilly, Administrative Assistant Linda Cala, Administrative Assistant Linda Bremer, Administrative Assistant Julie Niewinski, Administrative Assistant
---	---